

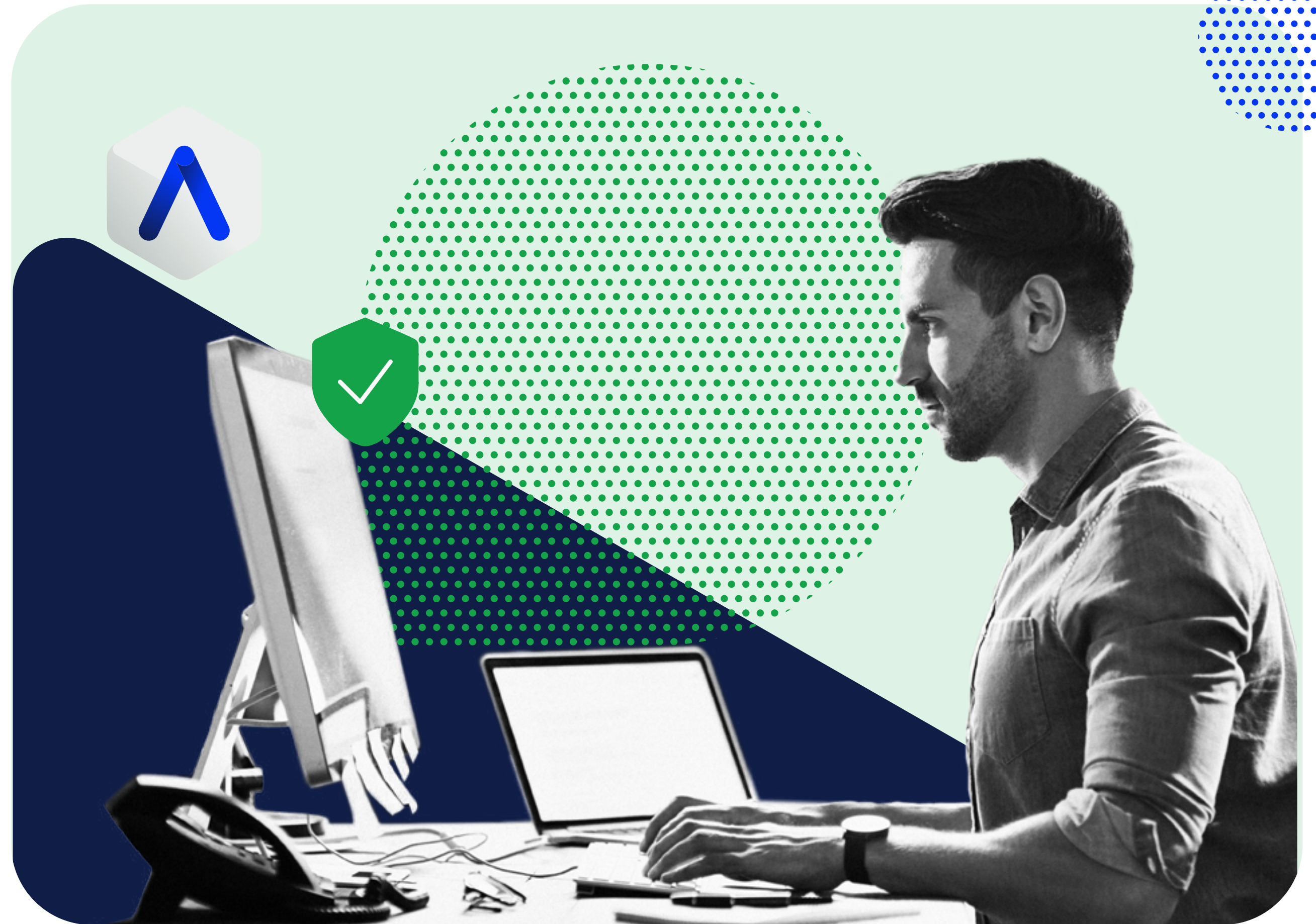
⊕ ADD-ON

DATA SHEET

Absolute Secure Web Gateway Service

Delivering a secure browsing experience for all – desk, mobile, or hybrid users

absolute.com



Workplace productivity, whether behind a desk or on a tarmac, is now more reliant on Web browsing than ever before. Unless employees are well trained and very careful, one inadvertent click can allow threat actors to exploit an employee's device and gain a foothold to move laterally across the corporate network. In turn, organizations need to protect against active threats, block access to inappropriate websites, and to prevent unauthorized data egress from employees' devices.

ABSOLUTE[®]



Secure Browsing Experiences for All

IT security practitioners are dealing with a dynamic threat landscape that requires agility without creating additional end user friction. That’s where Absolute® comes into play.

The Absolute Secure Web Gateway Service (powered by Ericom) is an add-on module that tightly integrates with the extensive policy capabilities in Absolute Secure Access, strengthening your organization’s security posture while improving your end user experience. It preserves a natural browsing experience for mobile, deskless, remote, and hybrid workers while defending organizations from viruses, malware, malicious code, zero-day threats, and data loss or leakage. It safely inspects, scrubs, and inoculates Web content in a cloud container before delivering it safely to the user’s Web browser. The Absolute Secure Web Gateway Service extends the same level of protection normally only associated with office or hybrid workers to mobile, deskless, and field workers.

- ✓ Enhances productivity with a fully secure, native browsing experience
- ✓ Protects users and organizations from sophisticated phishing, malware, credential theft, social engineering, and zero-day attacks
- ✓ Simplifies IT operations with deep policy integration and incremental protection levels
- ✓ Works with all common HTML5 browsers

Harvest the Power of a Mobile Security Service Edge (SSE) Solution

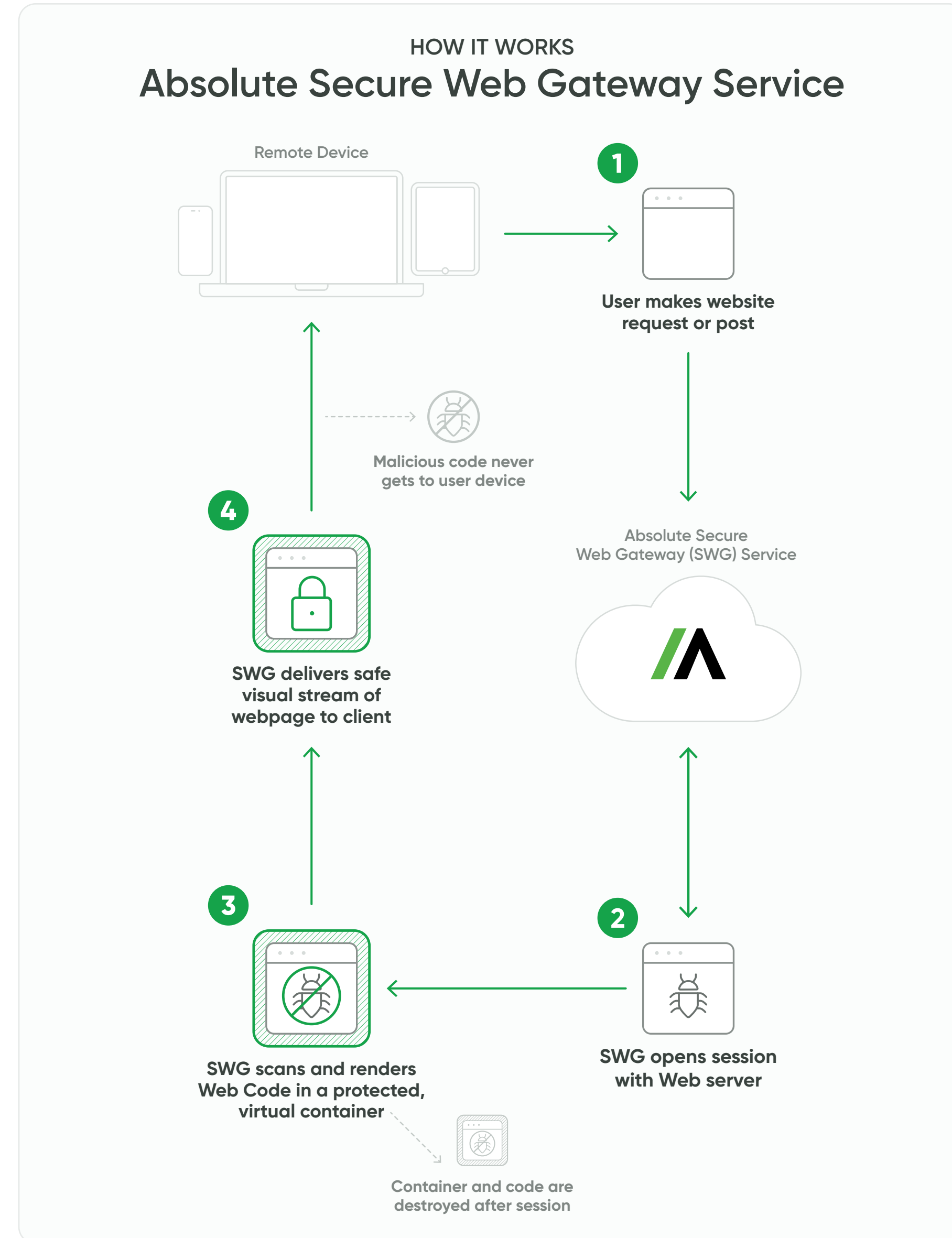
Whether your workers are at a home office or coffee shop, in a service vehicle, or on the tarmac, the Absolute Secure Web Gateway Service provides a more productive computing experience while protecting against sophisticated attacks and threats targeted at browsers and Web content. The Absolute Secure Web Gateway Service offers organizations important cloud-delivered security and protections:

- ✓ Multiple anti-virus scans
- ✓ Remote browser isolation
- ✓ Content disarm and reconstruction
- ✓ Data loss prevention

Users can securely browse the Web, click email links, and download files — without exposing their organization to malware, zero-day attacks, or other malicious code that could hinder business operations and worker productivity.

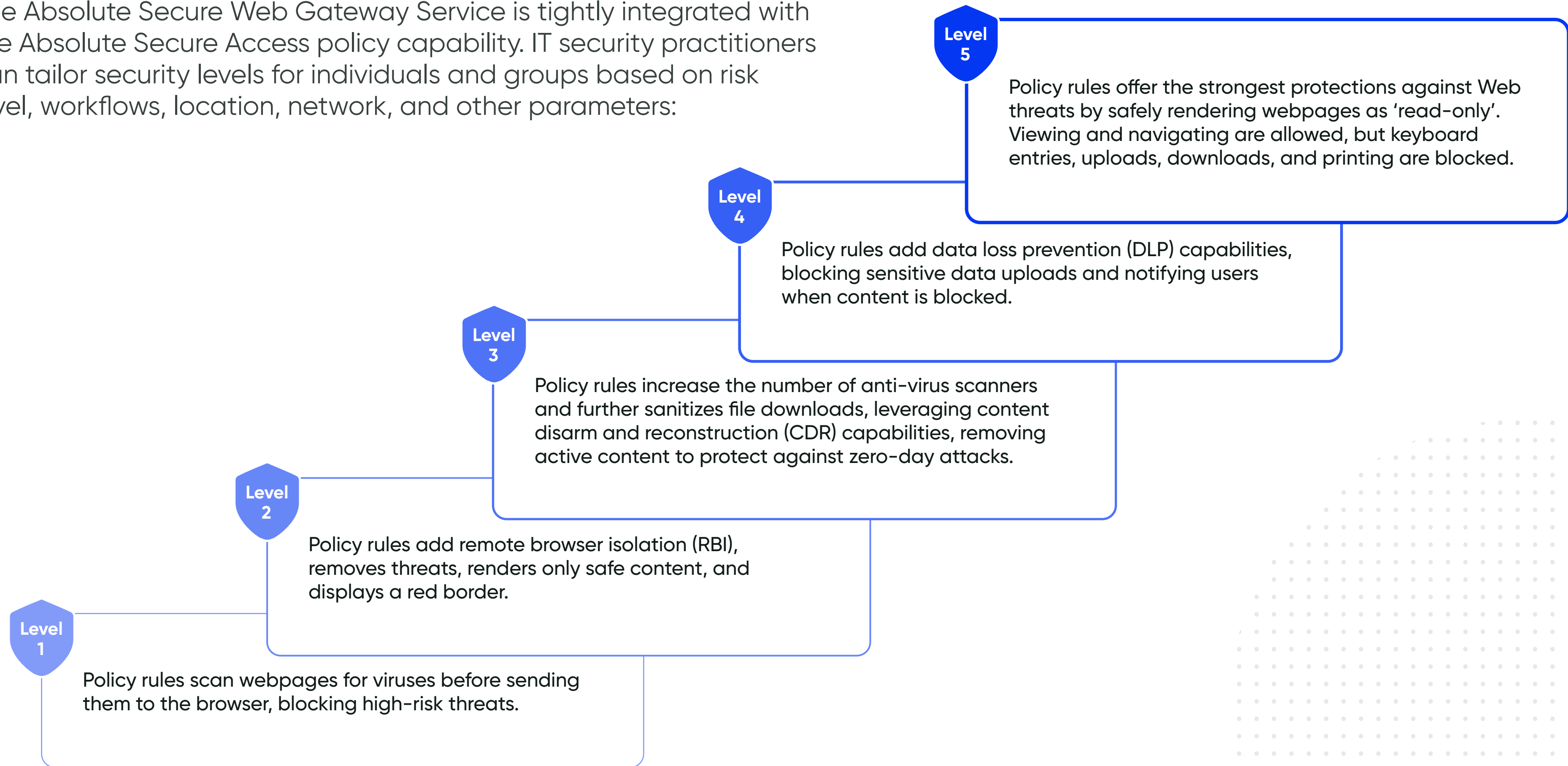
Key Capabilities Include

- ✔ **Scan for the presence of malware**, including worms, Trojan horses, and spyware. The Absolute Secure Web Gateway Service evaluates webpages, files, software, and application data to find and eliminate malware threats.
- ✔ **Block malware (including zero-day threats)** from reaching endpoints and networks by rendering websites in isolated containers located on remote servers far from the endpoint. This enables a secure, Zero Trust approach to Web browsing that can now be extended to both mobile/deskless workers as well as hybrid workers – protecting them from risky or unverifiable websites and malicious content.
- ✔ **Disarm and reconstruct content from file downloads**. Reconstruct documents in isolation before downloading, protecting against zero-day threats not detected otherwise by anti-virus scans.
- ✔ **Prevent inadvertent uploads of sensitive information** to maintain compliance, protect intellectual property, and reduce overall risk exposure. The Absolute Secure Web Gateway Service blocks sensitive uploads of files and Web forms as well as personally identifiable information. End users are notified when content is blocked.



When Security and Employee Experience Matter

The Absolute Secure Web Gateway Service is tightly integrated with the Absolute Secure Access policy capability. IT security practitioners can tailor security levels for individuals and groups based on risk level, workflows, location, network, and other parameters:



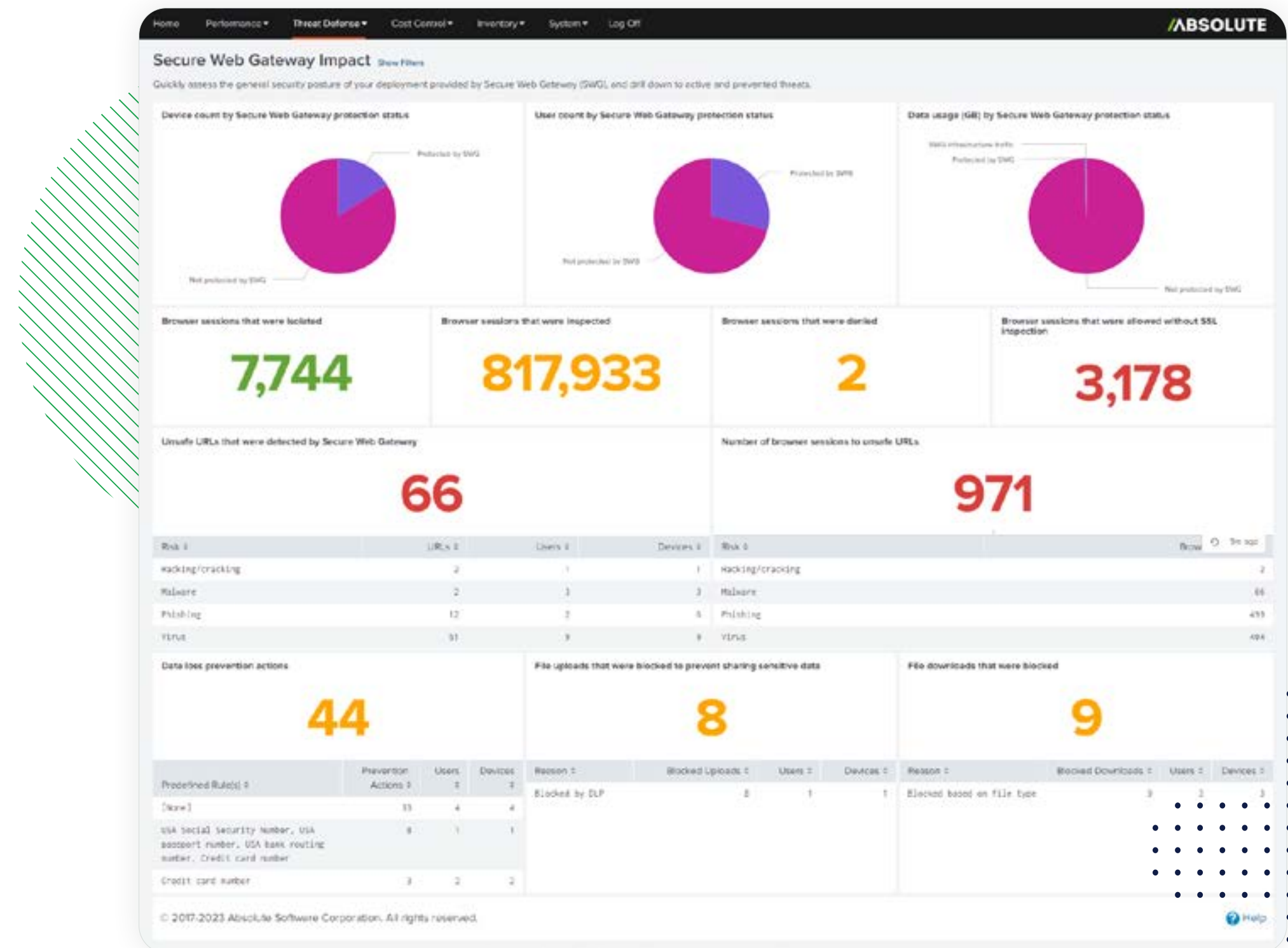
Secure Web Gateway Insights

The Absolute Secure Web Gateway Service feeds data to **Absolute Insights™ for Network**, providing real-time information for IT and security teams to quickly assess the security posture of the deployment and drill down to active and prevented threats.

- Summarize the overall impact of security policies and actions, data loss and prevention, browser sessions, file transfers, and user feedback.
- Detailed report panels list granular information such as:
 - › Unsafe session history by user, device, and URLs
 - › Data loss prevention activity logs across connected clients
 - › File transfers
 - › Client webpage visits

Getting Started

The Absolute Secure Web Gateway Service is available for free trial and purchase as an add-on module to Absolute Edge on-prem or SaaS. The Absolute Edge package is our most powerful Secure Access solution and encompasses, **Absolute VPN**, **Absolute ZTNA**, as well as **Absolute Insights for Network**.





ABSOLUTE[®]

Trusted by nearly 21,000 customers, Absolute Software is the only provider of self-healing, intelligent security solutions. Embedded in more than 600 million devices, Absolute is the only platform offering a permanent digital connection that intelligently and dynamically applies visibility, control and self-healing capabilities to endpoints, applications, and network connections – helping customers to strengthen cyber resilience against the escalating threat of ransomware and malicious attacks.

[Request a Demo](#)

 Nasdaq | ABST

 TSX | ABST



© 2023 Absolute Software Corporation. All rights reserved. ABSOLUTE, the ABSOLUTE logo, and NETMOTION are registered trademarks of Absolute Software Corporation or its subsidiaries. Other names or logos mentioned herein may be the trademarks of Absolute or their respective owners. The absence of the symbols [™] and [®] in proximity to each trademark, or at all, herein is not a disclaimer of ownership of the related trademark. All other trademarks are property of their respective owners. ABT-SA-Secure-Web-Gateway-DS-061223